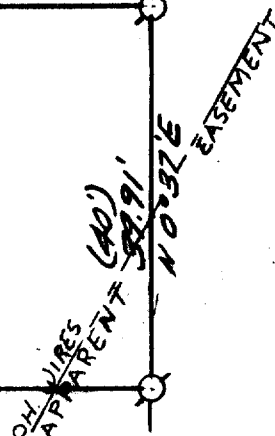


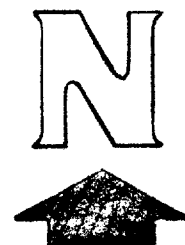
VILLAGE OF FONTANA, WALWORTH COUNTY, WISCONSIN

RECEIVE

gr. f



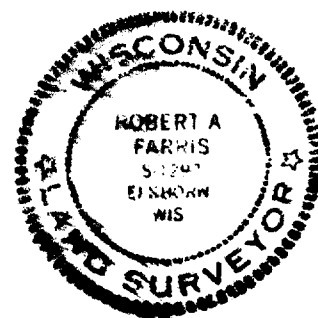
(45.88') (40')
45.43' 40.97'
N 104.1° E 100.24'



BEARINGS REF. TO
S. LINE LOT B
ASSIGNED N89°00'W

Robert A. Jarvis

9/20/85



PROJECT NO. 2465

5-625-F